

Errata for Exploring Shawl Shapes

Page 43

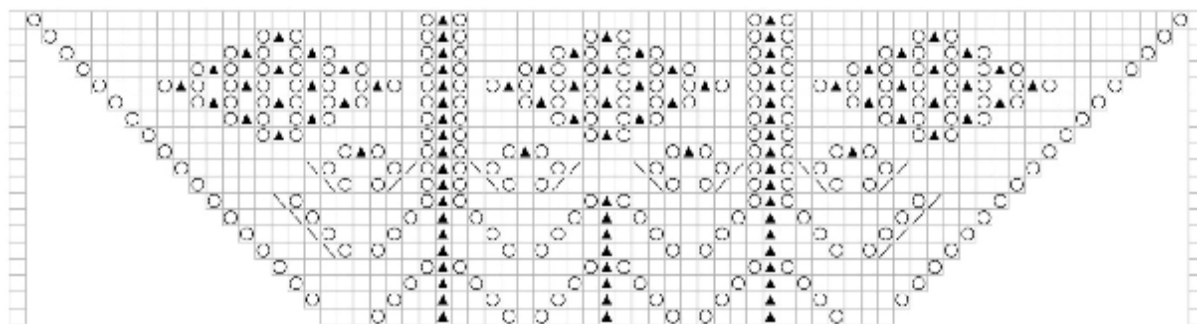
The **Increase Sequence** is with the charts on page 76 (see below).

Page 46

Centre Chart says 'all rows are charted'. It should read:
Only odd numbered rows are charted. Even numbered rows are all S1p, k to end.

Border Chart

The wrong chart has been inserted. The correct chart is below.
The row-by-row instructions are correct.



Page 54

On the schematic, the arrows for the border should point outwards, not round the edge.

Page 55

The first row of the Border instructions are wrong. It should read:

Row 1: K1, yo, k to last st, yo, k1.
(the chart is correct)

Page 62

The start of the pattern should read as follows:

With waste yarn, cast on 9 sts. Change to working yarn and knit 1 row.

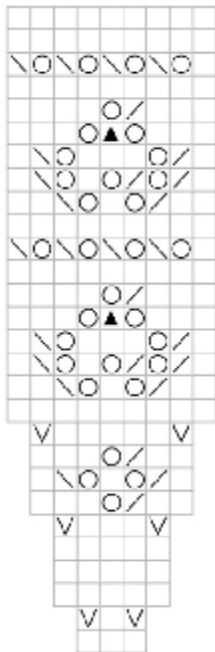
Row 1: K3, PM, m1, k1, m1, PM, k1, PM, m1, k1, m1, PM, k3. 13 sts

Row 2: S1p, k2, SM, k3, SM, m1, k1, m1, SM, k3, SM, k3. 15 sts

Finishing should read **5 sts** on one needle and **4 sts** on the other (not 4 and 3).

The **Gusset Chart** on p 79 has mistakes. The corrected chart and instructions are below:

Top Down Faroese Shawl - Gusset Chart



The row-by-row instructions are correct except for Rows 1 and 27. These should read:

Row 1: K3.

Row 27: K1, k2tog, yo, k3, yo, ssk, k1.

Page 66

The foundation row and instructions should read:

Foundation Row: K1, *PM, k1. Repeat from * seven times more.

Work Rows 1 to 25 of the Centre Chart, placing the chart 8 times between the markers, and ending each row with k1.

Page 68

There is a k3togtbl symbol missing in the final row of the chart. The row-by-row instructions are correct. (ie K1, k3togtbl, k1.)

Page 76

The chart diagrams have been shifted up one. Each chart is correct in itself, and each set of instructions is correct in itself, but they do not match! In each case the row-by-row instructions are under the correct title.

The chart placed for the Increase Sequence is the **36 st Chart**. (The Increase Sequence has no chart.)

The chart placed for the 36 st Chart is the **72 st Chart**.

The chart placed for the 72 st Chart is the **144 st Chart**.

Page 83

It is the maths, not the moths, which need fudging!